

# Evaluation of new photometer

This questionnaire provides the basis for selection a device configuration that can be used for a specific application. For the development of a meaningful solution proposal, the questions should be answered in detail as much as possible. Please send any sketches and additional documents to [support@sigrist.com](mailto:support@sigrist.com).

\*Required

## General details

### 1. Contact details \*

Company:  
 Name:  
 Address:  
 e-mail: Phone number

## Description of the application/ measurement point

### 2. What should be measured? \*

Turbidity	Oil traces
Colour	Concentration
Other:	

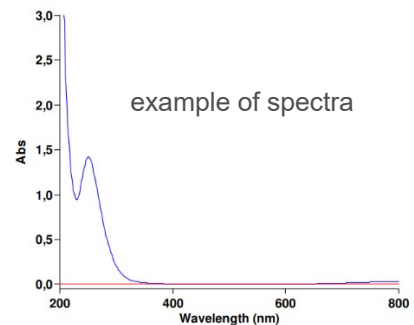
### 3. Description of the application/ measurement point \*

### 4. Desired measuring range with unit (e.g. 0-200 FNU) \*

### 5. Is the measurement already done (laboratory/ process)?\*

Yes No

6. If question 5 is answered with yes:  
 Detailed description of the measurement in the laboratory: usual values, sample preparation, equipment used, wavelength, spectra, measuring cell, etc..



**Details of the process:**

7. In which medium should be measured, e.g. drinking water (specify exact concentrations if possible)?\*

8. Possible disturbance components in the process?\*

Solids, if yes, which concentration:

Gas bubbles

Humidity (e.g. fog)

Other:

9. What is the temperature range of the process (min./max. in °C)? \*

10. What is the max. pressure of the process (pressure unit)? \*

**Details to material:**

11. Required material for measuring cell \*

Stainless steel. Details of quality:

Hastelloy C276

PVC

PVDF

Others:

12. Required sealing material (in contact with the medium)\*

EPDM

NBR

FPM (Viton)

FFPM (Kalrez)

FEP/FKM (Teflon coated Viton)

Others:

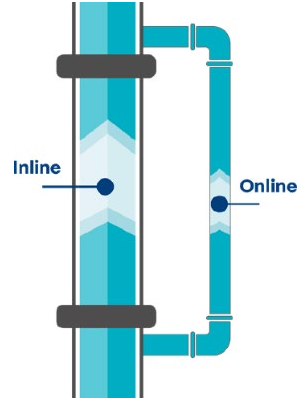
13: Is a certificate desired for the measuring cell/seals (e.g. PMI, WMS, WPQR, 3.1, 2.1 etc.)

If yes, indicate:

**Installation details (mechanical, electrical)**

14. Where is the unit installed (drawing) ? \*

- Inline
- Online
- Other:



15. Inner diameter of the sample line with unit \*

16. How is the measuring cell installed in the system? For flange, specify type \*

- Welding
- Others:

17. Ambient conditions at the measuring point (temperature, humidity, corrosive atmosphere, etc.)? \*

18. Is explosion protection required? \*

- Yes    required certificate and protection class:
- No



19. Existing power supply at measuring point (Volt/ Hertz)? \*

**Details on measurement signals, evaluation and network**

20. Measurement signal selection\*

- 4..20 mA
- Modbus TCP                      Modbus RTU
- Profibus DP                      Profinet IO
- Others:

21. Are analog inputs (4-20mA) necessary? \*

Yes                  No

22. Are digital in- or outputs necessary? Please describe what is required \*

**Additional details:**

23. Are additional certificates (Material, ISO,etc.) required? \*

24. Is a FAT (Factory Acceptance Test) or another specific test/inspection desired? \*

Yes

No

Specific, which:

25. Further comments: e.g. additional measuring parameters, IP protection class, desired accessories, etc.